



62 Laurel Drive, Burpengary , QLD



4



1



4

Beautiful Acreage Residence! Saltwater Inground Pool! 5kW Solar! 6mx9m Shed!

Set upon an elevated 3,363sqm allotment in a whisper quiet pocket of Burpengary, this beautifully appointed residence is the one you've been waiting for!

Built by the original owners, this super spacious home boasts a steel frame, 9ft high ceilings, 55,000L saltwater inground pool, 6m x 9m powered shed, and is surrounded by gorgeous established gardens!

Upon entering this delightful abode, you are greeted by a large living room with lovely bay window, showcasing views over manicured lawns. The home has been painted in recent years and presents beautifully! Modern tiles have also been installed internally throughout the residence and the entire front verandah.

The centrally located kitchen ? the true hear

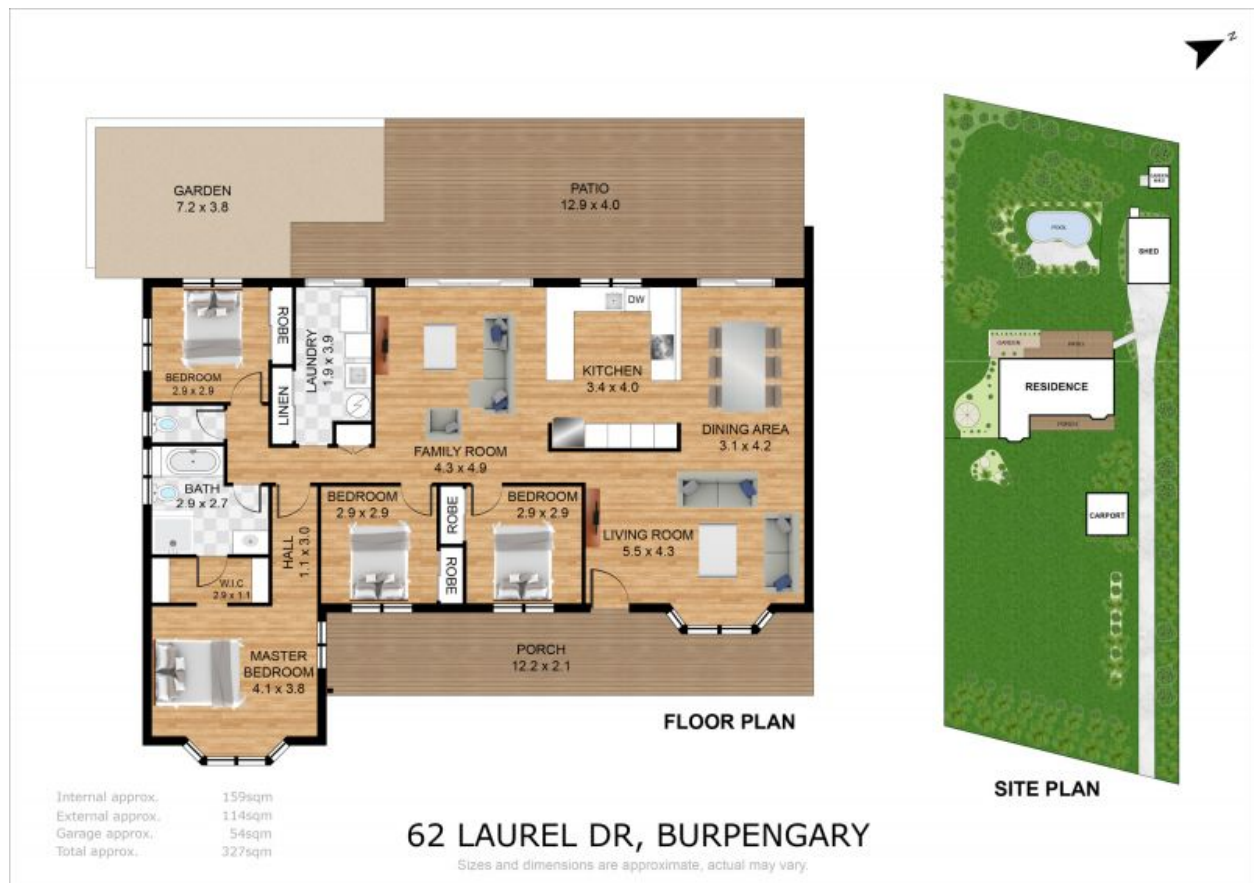
SOLD by ERICA SWANNELL!

Type: House
Sold Date: 18/01/2022
Land: 3363 m2
Council Rates: \$459.53 p/q



Erica Swannell

0407 471 529



62 Laurel Drive, Burpengary QLD