



13 Junee Street Redland Bay QLD

4 2 2

Fancy a coastal lifestyle? Fishing and crabbing just metres from your door? Well don't let this opportunity pass you by! Fantastic bayside living could be yours!

This ultra-modern high-set home not only features ocean views from the upper floor, you'll also love your own private deck out the back, where you can catch fresh fish and crabs - perfect for a lazy Sunday afternoon with friends or family!

Set on a level 405sqm, this beautifully appointed home also offers stone benchtops, 5 x reverse-cycle air conditioners, 2 x separate internal living areas, 5 x tv brackets installed, covered outdoor entertaining area and 19 x solar panels - for the astute buyer!

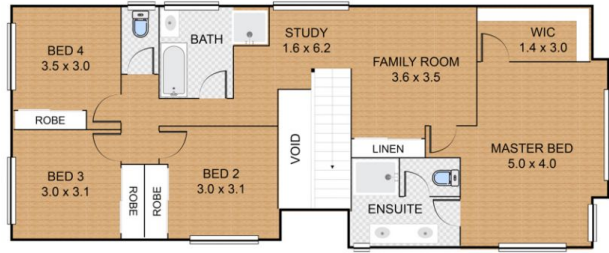
The centrally located kitchen - the true heart of the home -

Land Size : 405 sqm

View : <https://www.generatere.com.au/7584359>



Erica Swannell
07 3639 0161



FLOOR 2



13 Junee St, **REDLAND BAY**

Int: 169sqm | Ext: 14sqm | Car: 32sqm | Total: 215sqm



DISCLAIMER: THIS FLOOR PLAN IS FOR ILLUSTRATIVE PURPOSES ONLY. WHILST EVERY ATTEMPT HAS BEEN MADE TO ENSURE THE ACCURACY OF THIS FLOOR PLAN, ALL MEASUREMENTS ARE APPROXIMATE ONLY. NO RESPONSIBILITY IS TAKEN FOR ANY ERRORS, OMISSION OR MISS-STATEMENT. POTENTIAL PURCHASERS SHOULD MAKE THEIR OWN ENQUIRIES AS TO THE ACCURACY OF THIS FLOOR PLAN.