



23 Craigslea Drive Caboolture QLD

4 1 6

Set upon an elevated 4,086sqm allotment in a whisper quiet pocket of Caboolture, this beautifully appointed residence is the one you've been waiting for!

This delightful property has been recently painted internally, plush carpets laid in lounge room and all 4 x bedrooms, plus modern, timber-look flooring laid throughout the kitchen, dining and hall.

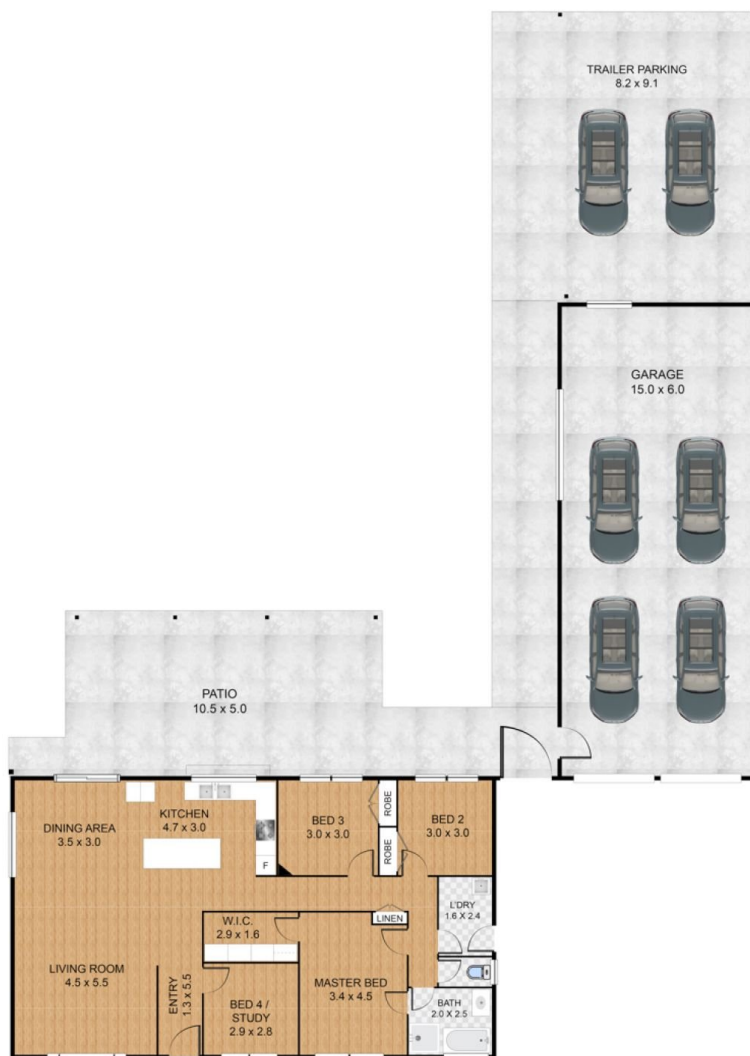
There's a huge covered outdoor entertaining area with built-in timber bar and firepit, which will be great for entertaining friends, or toasting marshmallows with the kids!

There's also a huge 15m x 6m powered shed, which easily accommodates 4 x vehicles, plus there's a 9m x 6m double carport with a 3m high roof, for your caravan and boat with

Price : \$ 850,000
Land Size : 4086 sqm
View : <https://www.generatere.com.au/7640944>



Erica Swannell
07 3639 0161



23 Craigslea Dr, **CABOOLTURE**

Int: 134sqm | Ext: 52sqm | Car: 165sqm | Total: 351sqm



DISCLAIMER: THIS FLOOR PLAN IS FOR ILLUSTRATIVE PURPOSES ONLY. WHILST EVERY ATTEMPT HAS BEEN MADE TO ENSURE THE ACCURACY OF THIS FLOOR PLAN, ALL MEASUREMENTS ARE APPROXIMATE ONLY. NO RESPONSIBILITY IS TAKEN FOR ANY ERRORS, OMISSION OR MISS-STATEMENT. POTENTIAL PURCHASERS SHOULD MAKE THEIR OWN ENQUIRIES AS TO THE ACCURACY OF THIS FLOOR PLAN.