



## 15 Jillian Court Burpengary QLD

4 2 2

Set upon a sprawling 3,117sqm allotment in a whisper quiet cul-de-sac, this immaculate residence features a luxury, resort-style inground pool and 5kW solar panels!

Owned by the one family, since originally being built, this spectacular home presents a wonderful opportunity to secure an acreage property in the Burpengary Meadows State School catchment!

The entire home has been repainted internally in recent years, in modern, neutral tones and presents beautifully.

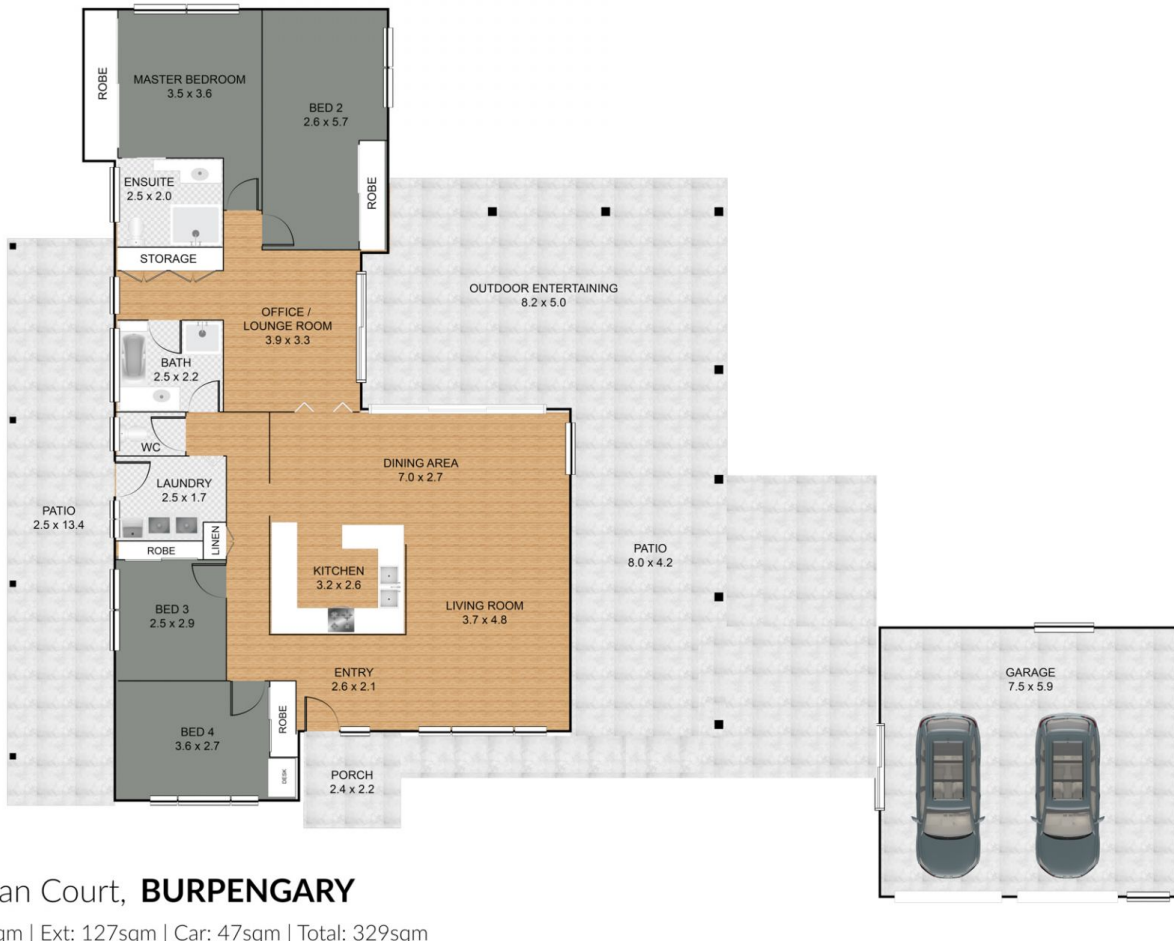
Upon entry, you'll note the lovely stained glass inserts in your timber front door and high ceilings in the foyer.

To your left, you'll find the first of four large bedrooms. This Queen-sized bedroom features a built-in robe, ceiling fan

**Price** : \$ 975,000  
**Land Size** : 3117 sqm  
**View** : <https://www.generatere.com.au/7843756>



**Erica Swannell**  
**07 3639 0161**



DISCLAIMER: THIS FLOOR PLAN IS FOR ILLUSTRATIVE PURPOSES ONLY. WHILST EVERY ATTEMPT HAS BEEN MADE TO ENSURE THE ACCURACY OF THIS FLOOR PLAN, ALL MEASUREMENTS ARE APPROXIMATE ONLY. NO RESPONSIBILITY IS TAKEN FOR ANY ERRORS, OMISSION OR MISS-STATEMENT. POTENTIAL PURCHASERS SHOULD MAKE THEIR OWN ENQUIRIES AS TO THE ACCURACY OF THIS FLOOR PLAN.





## 15 Jillian Court, **BURPENGARY**

Int: 155sqm | Ext: 127sqm | Car: 47sqm | Total: 329sqm



DISCLAIMER: THIS FLOOR PLAN IS FOR ILLUSTRATIVE PURPOSES ONLY. WHILST EVERY ATTEMPT HAS BEEN MADE TO ENSURE THE ACCURACY OF THIS FLOOR PLAN, ALL MEASUREMENTS ARE APPROXIMATE ONLY. NO RESPONSIBILITY IS TAKEN FOR ANY ERRORS, OMISSION OR MISS-STATEMENT. POTENTIAL PURCHASERS SHOULD MAKE THEIR OWN ENQUIRIES AS TO THE ACCURACY OF THIS FLOOR PLAN.