



2 Ladners Court Petrie QLD

4 2 2

Set upon an elevated 902sqm north facing allotment, this beautifully appointed home is the one you've been waiting for!

Located in a whisper quiet pocket of Petrie on Pine Estate, this immaculate residence has been lovingly cared for by the current owners and boasts manicured lawns and gardens.

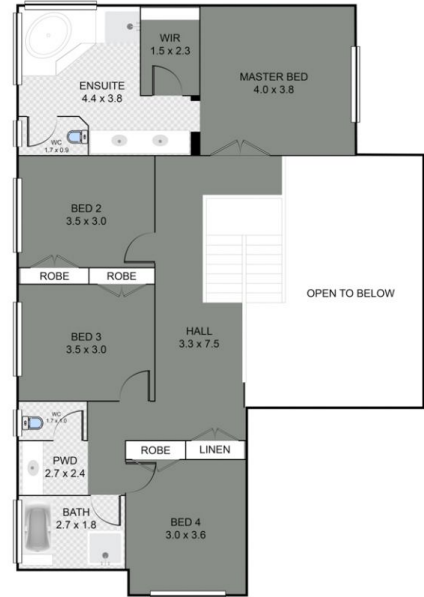
This delightful property features 4 spacious bedrooms on the upper floor, study on the ground floor (which could be utilised as a fifth bedroom), 3 separate internal living areas, double-gate side access for your tinnie or trailer, and is surrounded by gorgeous established gardens!

Upon entering this delightful abode, via impressive double timber doors, you are greeted by a large foyer with

Price : \$ 988,888
Land Size : 902 sqm
View : <https://www.generatere.com.au/7867472>



Erica Swannell
07 3639 0161



FLOOR 2
(NOT TO SCALE)

2 Ladners Court, **PETRIE**

Int: 292sqm | Ext: 38sqm | Car: 36sqm | Total: 366sqm

DISCLAIMER: THIS FLOOR PLAN IS FOR ILLUSTRATIVE PURPOSES ONLY. WHILST EVERY ATTEMPT HAS BEEN MADE TO ENSURE THE ACCURACY OF THIS FLOOR PLAN, ALL MEASUREMENTS ARE APPROXIMATE ONLY. NO RESPONSIBILITY IS TAKEN FOR ANY ERRORS, OMISSION OR MISS-STATEMENT. POTENTIAL PURCHASERS SHOULD MAKE THEIR OWN ENQUIRIES AS TO THE ACCURACY OF THIS FLOOR PLAN.

